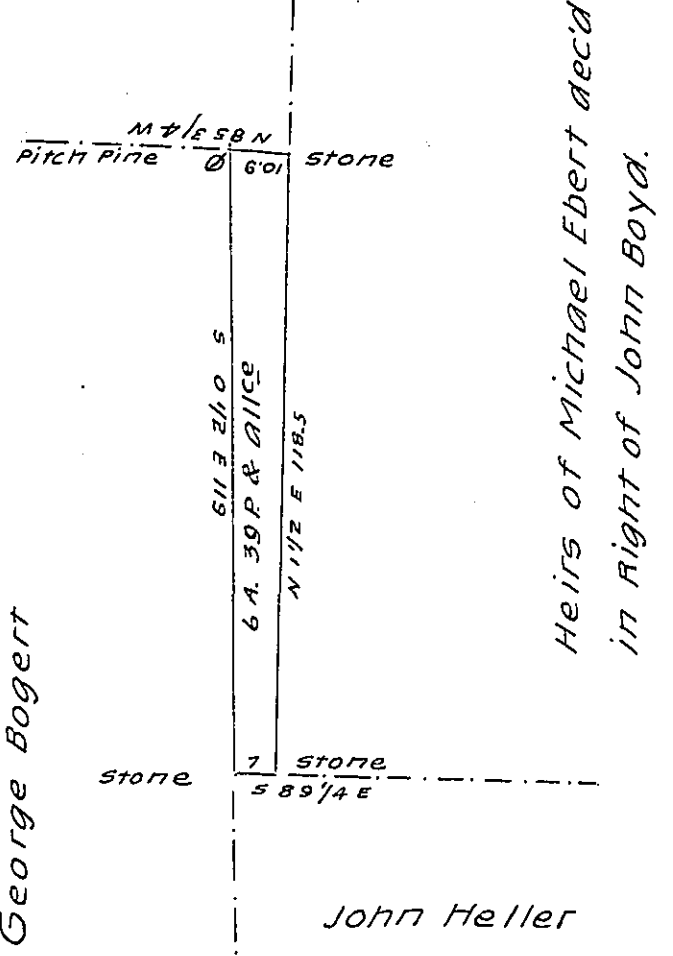


Paul Berthold
in Right of
Jacob Bodine



Draft of a tract of Land Situate on the head waters of Little Fishing Creek in Madison Township Columbia County, Containing Six Acres and Thirty nine perches and allowance of six P. Ct. &c. surveyed January 27th 1848 for Henry Ebert, By virtue of his Warrant dated the third day of Jan. 1848.

S. Neyhard D.S.

To John Laporte Esq
Surveyor General.

Lime Ridge, Jan. 29th, 1848.

IN TESTIMONY that the above is a copy of the original remaining on file in the Department of Internal Affairs of Pennsylvania, made conformably to an Act of Assembly approved the 16th day of February, 1833, I have hereunto set my Hand and caused the Seal of said Department to be affixed at Harrisburg, this nineteenth day of August 1904

James D. Brown
Secretary of Internal Affairs.